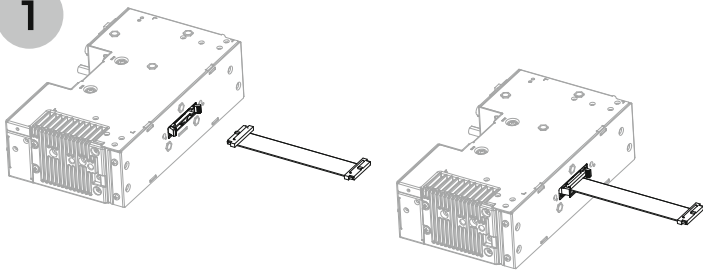


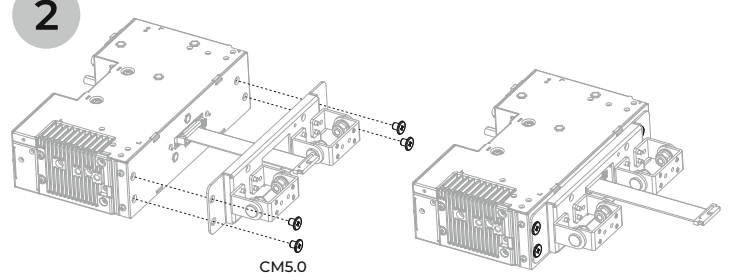
KG21 Assembly Instruction

1



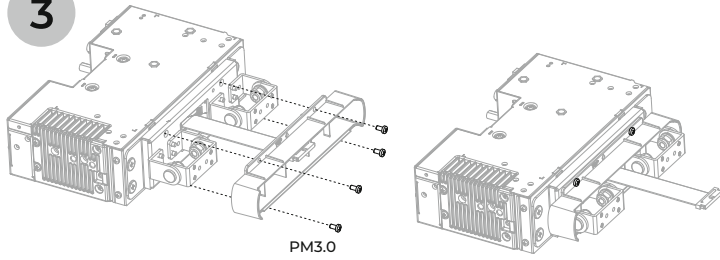
Connect the connection cable to the main unit

2



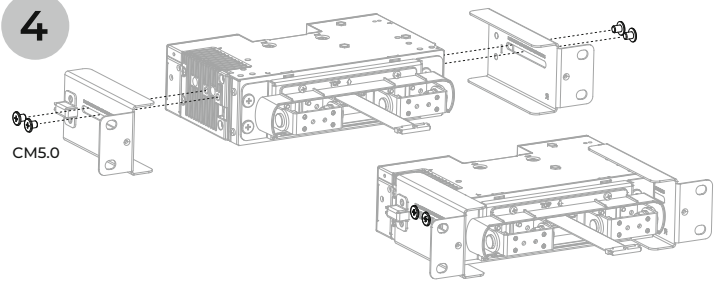
Put the main unit and rotary damper together

3



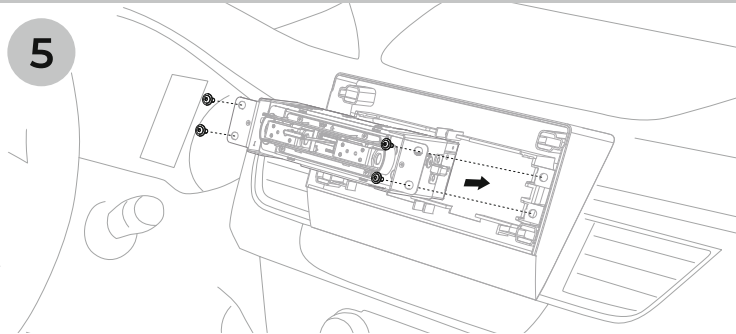
Put the main unit and rotary damper together

4



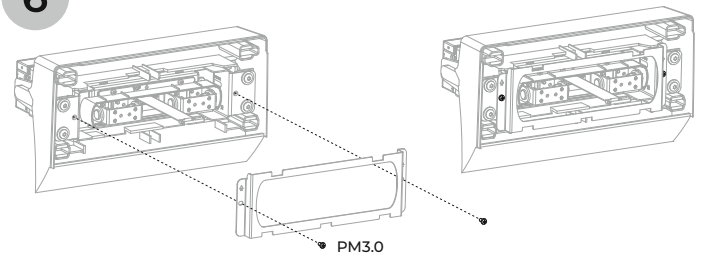
Put the main unit and mounting plates together

5



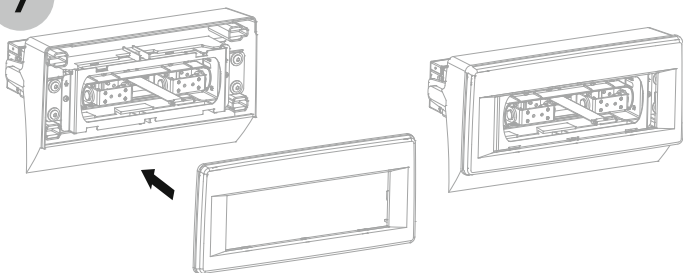
Put the main unit and the original radio bezel together

6



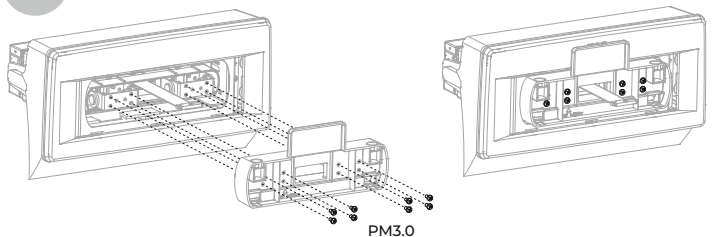
Put the main unit and the metal plate together

7



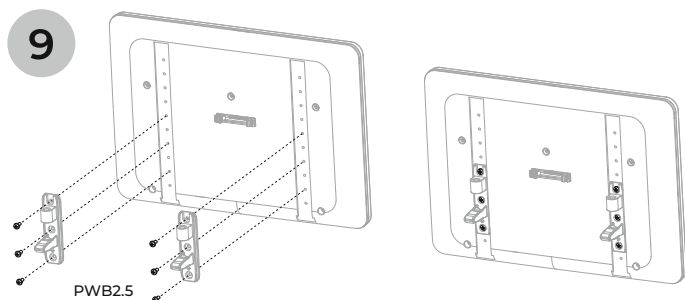
Put the main unit and the original radio bezel together

8



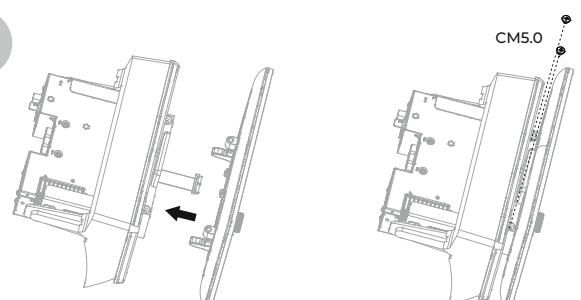
Put the radio main unit and monitor stand together

9



Put the display and the display holder together

10



Install the radio main unit and fix the display